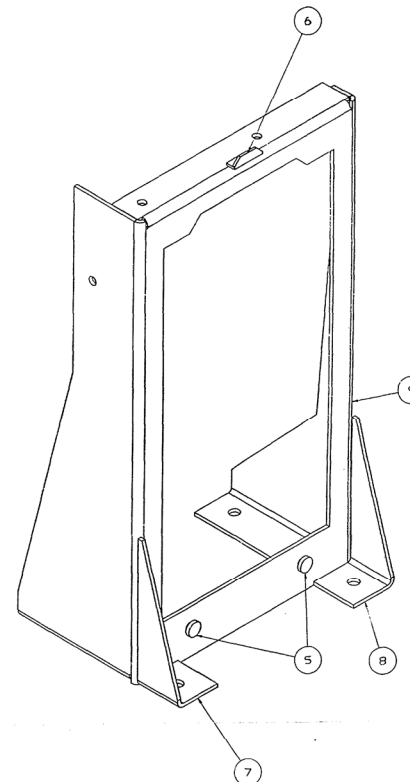
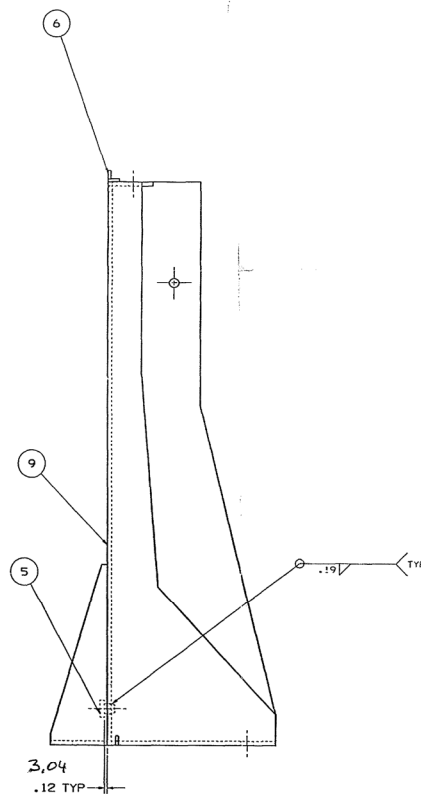


APC NO.	REV.	REVISION	DATE	BY	CHK
060121	81	REDRAWN & REDESIGNED IN LG, REV A REMO.			
	82	17.9 ADDED.			
	83	17.5 THRU 4 REMO.			
			25JAOO	DDK	ly



4044	1		SHEET	40089407	9
2399	1		ANGLE	8458827	8
239	1		ANGLE	8458826	7
2358	1		ANGLE	8458769	6
2201	2		BUTTON	8166026	5
				8458676	4
				8396125	3
				8458591	2
				8458592	1
	NO. RECD	MATL/NOTES	NAME OF PART	PART NO.	ITEM NO.

APC NO.	REV.	REVISION	DATE	BY	CHK
060121	81	REDRAWN & REDESIGNED IN LG, REV A REMO.			
	82	17.9 ADDED.			
	83	17.5 THRU 4 REMO.			
			25JAOO	DDK	ly

Yer No 12385

WELD BRAZE SPEC	A.I. 1651
WELD SYMBOLS	A.I. 1044

FOR MANUFACTURING

TOLERANCES ON ALL DIMENSIONS NOT SPECIFIED ON THE DRAWING TO BE IN ACCORDANCE WITH A.S.I. 2400.
BREAK ALL SHARP CORNERS UNLESS OTHERWISE SPECIFIED.
ALL DIMENSIONS ARE IN INCHES UNLESS OTHERWISE SPECIFIED.

APERTURE CARD ONLY	UNLESS OTHERWISE SPECIFIED, FOR DIAMETRIC FEATURES, ROUNDNESS MUST WITHIN THE MMC AND LMC BOUNDARY. SEPARATE THE POSITION CALLOUTS IN BE OIAED SEPARATELY, REGARDLESS OF SURFACE INTERFERENCE. PERFECT FORM REQUIRED FOR FEATURE OF SIZE AT MMC.
	GEOMETRIC TOLERANCING SYMBOLS

COMPUTER GRAPHICS
DWG-DE ONLY

APPROXIMATE
WEIGHT (LBS)

☐ FLAT ☐ RADIUS ☐ TOTAL RADIUS ☐ ROUND
☐ HOLLOW ☐ STRAIGHT ☐ TRUE POSITION ☐ CHAMFER
☐ CONCENTRIC ☐ PERPENDICULAR ☐ DIAMETER ☐ PARALLEL
☐ MAXIMUM MATERIAL CONDITION (MNC) ☐ PROFILE OF A LINE
MINIMUM OF A LINE

21.5	① BEST MATERIAL CONDITION TUMT	④ PROFILE OF A SURFACE	⑦ SURFACE IDENTIFICATION
	② PROJECTED TOLERANCE ZONE	⑤ SURFACE CONDITION	⑧ SURFACE
MATERIAL	③ ROUNDOFF OF FEATURE SIZE LIMIT	⑥ SURFACE TREATMENT	

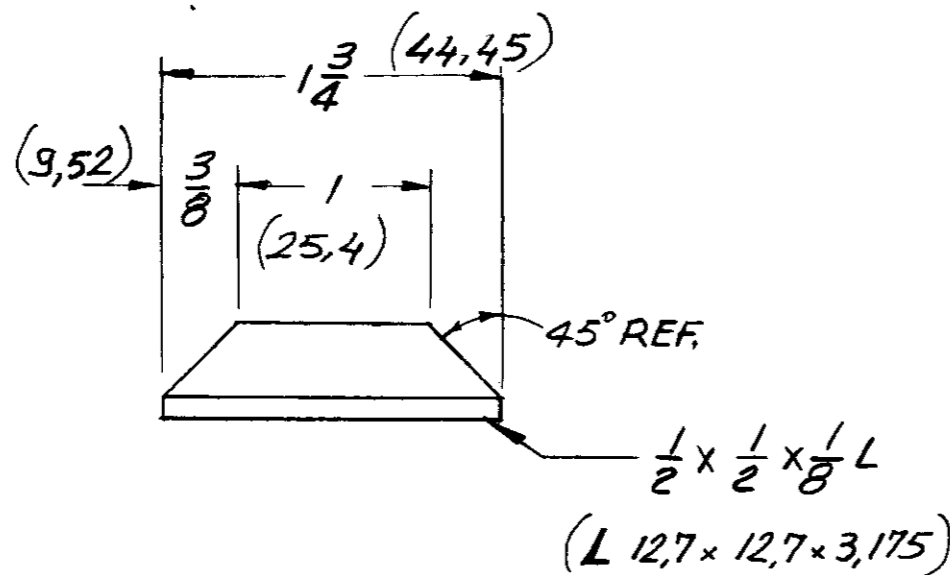
  		LA 66-1587, NY 66-1587, W.S.A. BOSTON, WASHINGTON, NEW YORK, CHICAGO LONDON, SAN FRANCISCO, LOS ANGELES
E.F.	03FE71	EDWARD J. ACH

FR	ERS	03MA71	FRAME ASM	
FR	ERS	03MA71	DESCRIPTION	REF
FR	ERS	03MA71	FIRST USED ON	FIRST NO

RCN		03AP71	0T25MC DEBA	8458593
WAB		03AP71		
				SHEET 1 OF 1

NO. SOLID 4 36 500M

8458769

TOLERANCES ON ALL DIMENSIONS NOT
SPECIFIED ON THE DRAWING TO BE IN
ACCORDANCE WITH A.I.-2100.BREAK ALL SHARP
CORNERS UNLESS
OTHERWISE SPECIFIED.COUNTERSINK ALL TAPPED
HOLES 118° X ONE THR'D DEEP.SURFACE FINISH SPECS.
IS IN ACCORDANCE
WITH G.M. ENG'R STDS.1703
149WT. 0.061 #
Tot. Ag = 27.6 gr.

RECORDED

R. F. C. NO.		REV. LET.	REVISION	DATE	BY	CK.	APV'D.	MATERIAL		NAME OF PART		PART NO.	IT. NO.
								MS 4361 STL.		ELECTRO-MOTIVE DIVISION			
								DR. <i>Jacina</i> 3-1-71		GENERAL MOTORS CORPORATION			
								CH. DR. <i>Ed. Bullmann</i> 3-3-71		LA GRANGE, ILLINOIS, U.S.A.			
								SUP. <i>ENR</i> 3/3/71		ANGLE (KOSEBENT)			
								WELD. <i>ENR</i> 3/4/71		DATE OF PRINT		PART NO.	
FIRST USED ON								MOD. ENGR. <i>ENR</i> 3-4-71				8458769	
PROJ. 98721								ENGR. <i>ENR</i> 3-4-71					
GT26 MC													

8458826
8458827

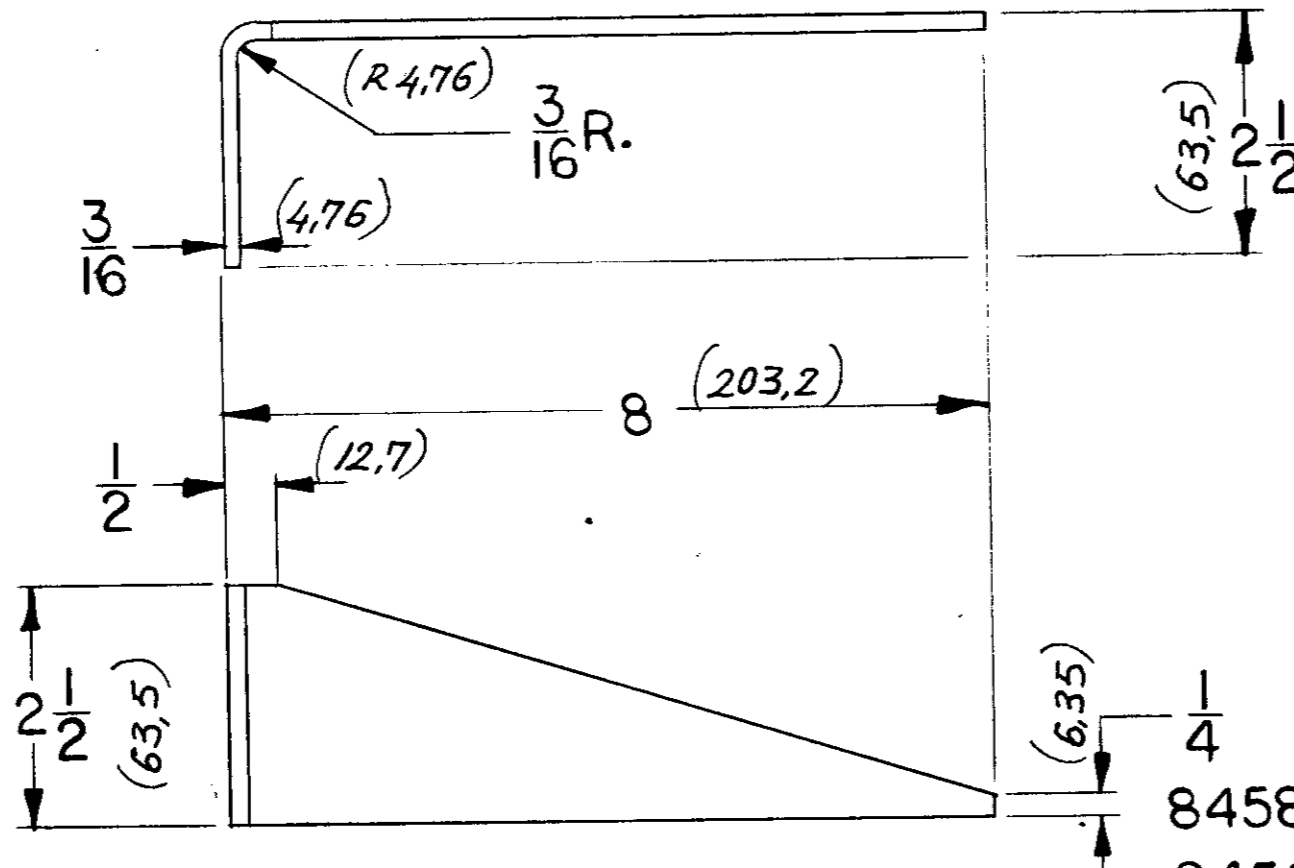
TOLERANCES ON ALL DIMENSIONS NOT SPECIFIED ON THE DRAWING TO BE IN ACCORDANCE WITH A.I.-2100.

BREAK ALL SHARP CORNERS UNLESS OTHERWISE SPECIFIED.

COUNTERSINK ALL TAPPED HOLES 118° X ONE THR'D DEEP.

SURFACE FINISH SPECS. IS IN ACCORDANCE WITH G.M. ENG'R STDS.

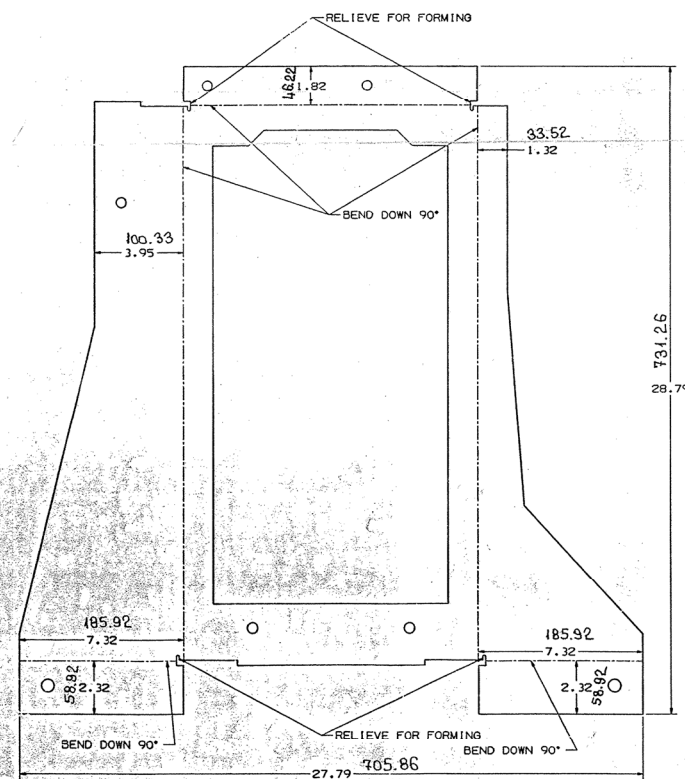
1703 150



Görülen
8458826-SHOWN
Aksi
8458827-OPP.

Takibi Ağ = 421 gr. WT. -.93

R. F. C. NO.		REV. LET.	REVISION	DATE	BY	CK.	APV'D.	MATERIAL EMS 55 HRSS COM. QU.		NAME OF PART ELECTRO-MOTIVE DIVISION GENERAL MOTORS CORPORATION LA GRANGE, ILLINOIS, U.S.A.		PART NO.	IT. NO.
								NO. REQUIRED PER ASSEMBLY	DR. <i>E. F. J. J.</i>	DATE	ANGLE (KÖSEBENT)		
									3-2-71				
								CK. <i>E. F. J. J.</i>	3-2-71				
								SUP. <i>ENR</i>	CH. DR. <i>ENR</i>	3-3-71			
								WELD.	MOD. ENGR. <i>ENR</i>	3-4-71	DATE OF PRINT		PART NO.
FIRST USED ON GT 26 MC								MAT. <i>ENR</i>	ENGR. <i>ENR</i>	3-4-71			8458826 8458827



(A3) F/P DEVELOPMENT
REFERENCE INFORMATION ONLY

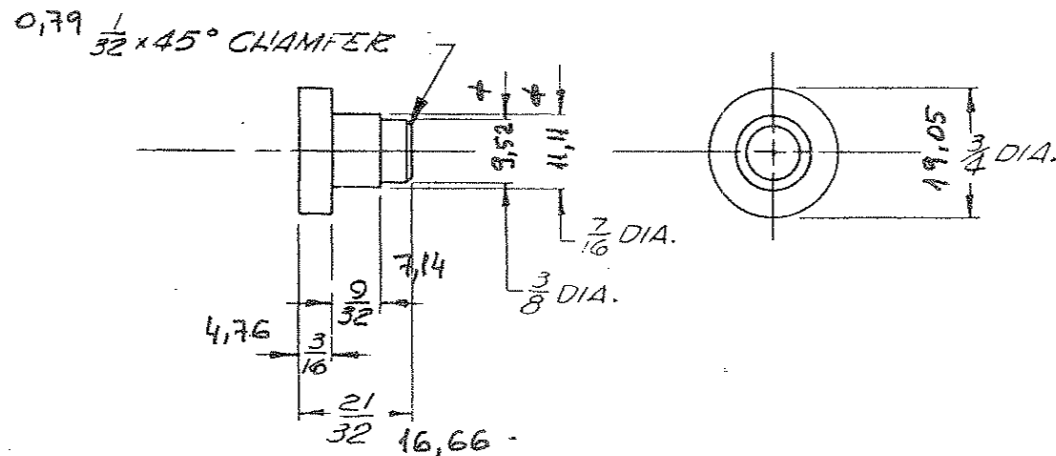
Yer No. <u>1777</u> Size <u>F</u>	
WELD BRAZE SPEC <u>A.I. 1051</u>	
WELD SYMBOLS <u>A.I. 1046</u>	
FOR MANUFACTURING	
TO DIMENSIONS ON ALL DIMENSIONS NOT SPECIFIED ON THIS DRAWING THE FOLLOWING DIMENSIONS SHALL APPLY: FINISH ALL SURFACES UNLESS OTHERWISE SPECIFIED. DIMENSIONS ARE TO BE TAKEN FROM THE CENTERED DIMENSION LINE UNLESS OTHERWISE SPECIFIED.	
APERTURE CARD ONLY (APPROXIMATE WEIGHT ONLY)	DIMENSIONAL TOLERANCES (APPROXIMATE WEIGHT ONLY)
(1.0)	DIMENSIONAL TOLERANCES (APPROXIMATE WEIGHT ONLY)
ENG 50 HRSS COM. D.P.	DIMENSIONAL TOLERANCES (APPROXIMATE WEIGHT ONLY)
DEXEL KILMAS	SHEET
BLANCHARD	40089407
5TH	SHEET 1 OF 1
00	US 100 136 FORM 1

8166026

PERMISSIBLE VARIATION ON COMMON
FRACTION DIMENSIONS TO MACHINED SURFACES
TO BE $\pm .010$ UNLESS OTHERWISE SPECIFIED.
FABRICATION TOLERANCE $\pm \frac{1}{32}$

BREAK ALL SHARP CORNERS
UNLESS OTHERWISE SPECIFIED.

COUNTERSINK ALL TAPPED
HOLES 118° & ONE THIRD DEEP



12 MA

Ver No	Sira No
12201	

RS+37-2

				MATERIAL MS 4361 STEEL		NAME OF PART		PART NO.	IT. NO.
				DR. <i>L.W. Buesch</i> DATE 6-9-50		ELECTRO-MOTIVE DIVISION GENERAL MOTORS CORPORATION LA GRANGE, ILLINOIS, U.S.A. BUTTON			
				CK. <i>A. G. L. K. (S)</i> 6-13-50					
				CH. CK. <i>63</i> SUP. <i>63</i> 7-11-50					
				WELD. <i>63</i> CH. CK. <i>63</i> 7-11-50		DATE OF PRINT		PART NO.	
FIRST USED ON <i>EBAED</i>				HATL <i>63</i> ENGR. <i>ME</i> 7-12-50				8166026	
R. F. C. NO.	REV. LET.	REVISION	DATE	BY	CK.	APV'D.			

FORM EMD 40342 5000 5-49

GLENHOL & KERR, CHICAGO

M-0302

A